

# SPECIFICATIONS

\*With rubber shoe type

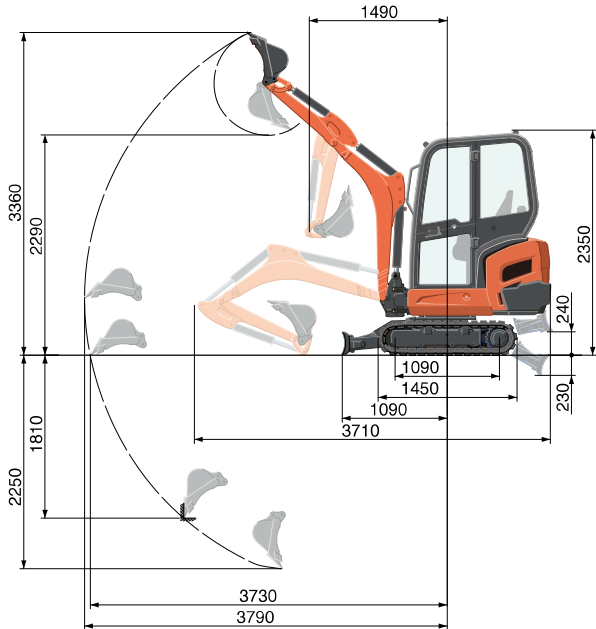
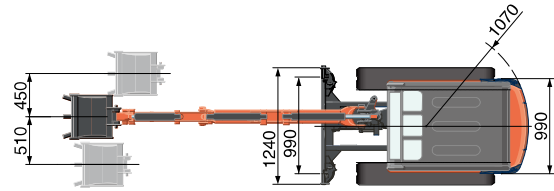
Model		KX016-4		
Machine weight* <sup>1</sup> (cabin / canopy)		kg	1540 / 1490	
Operating weight* <sup>2</sup> (cabin / canopy)		kg	1615 / 1565	
Bucket capacity, std. SAE/CECE		m <sup>3</sup>	0.035	
Bucket width (with / without side teeth)		mm	422 / 402	
Engine	Model		D782-BH	
	Type		Water-cooled, diesel engine E-TVCS	
	Output ISO9249	PS/rpm	13 / 2300	
		kW/rpm	9,6 / 2300	
	Number of cylinders		3	
	Bore × Stroke	mm	67 × 73,6	
Displacement	cc	778		
Overall length		mm	3710	
Overall height (cabin / canopy)		mm	2350 / 2330	
Swivelling speed		rpm	9,1	
Rubber shoe width		mm	230	
Tumbler distance		mm	1090	
Dozer size (width × height)		mm	990 / 1240 × 230	
Hydraulic pumps	P1, P2		Variable displacement pump	
	Flow rate	ℓ /min	16,6	
	Hydraulic pressure	MPa (kgf/cm <sup>2</sup> )	20,6 (210)	
	P3		Gear Type	
	Flow rate	ℓ /min	10,4	
	Hydraulic pressure	MPa (kgf/cm <sup>2</sup> )	20,1 (205)	
Max. digging force (arm / bucket)		kN (kgf)	7.3 (740) / 12.7 (1300)	
Boom swing angle (left/right)		deg	75 / 60	
Auxiliary circuit	Flow rate	ℓ /min	27	
	Hydraulic pressure	MPa (kgf/cm <sup>2</sup> )	20,6 (210)	
Hydraulic reservoir		ℓ	28	
Fuel tank capacity		ℓ	21	
Max. travelling speed (low / high)		km/h	2,1 / 3,8	
Ground contact pressure (cabin / canopy)		kPa (kgf/cm <sup>2</sup> )	26,5 (0,27) / 25,5 (0,26)	
Ground clearance		mm	160	
Noise level	LpA	dB (A)	76	
	LwA (2000/14/EC)	dB (A)	93	
Vibration* <sup>3</sup>	Hand arm system (ISO 5349-2:2001)	Digging	m/s <sup>2</sup> RMS	<2,5
		Levelling	m/s <sup>2</sup> RMS	<2,5
		Driving	m/s <sup>2</sup> RMS	<2,5
		Idling	m/s <sup>2</sup> RMS	<2,5
	Whole body (ISO 2631-1:1997)	Digging	m/s <sup>2</sup> RMS	<0,5
		Levelling	m/s <sup>2</sup> RMS	<0,5
		Driving	m/s <sup>2</sup> RMS	<0,5
		Idling	m/s <sup>2</sup> RMS	<0,5

\*<sup>1</sup> With 32.5 kg standard bucket ready for operation.

\*<sup>2</sup> Machine weight includes 75 kg operator.

\*<sup>3</sup> These values are measured under specific conditions at maximum engine speed and can deviate, depending on the operating status.

# WORKING RANGE



950 mm arm  
Unit: mm

# LIFTING CAPACITY

Cabin, Rubber version

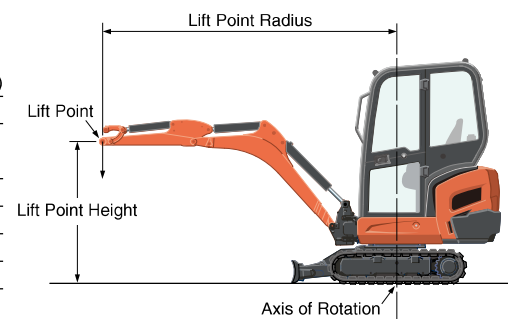
Lift Point Height	Lifting point radius (2m)			Lifting point radius (max.)			kN (ton)
	Over-front		Over-side	Over-front		Over-side	
	Blade Down	Blade UP		Blade Down	Blade UP		
1.5m	3.0 (0.30)	3.4 (0.35)	3.4 (0.35)	-	-	-	
1.0m	4.5 (0.46)	3.6 (0.37)	3.5 (0.36)	-	-	-	
0.5m	5.4 (0.55)	3.4 (0.34)	3.3 (0.34)	2.6 (0.27)	1.7 (0.17)	1.7 (0.17)	
0m	5.3 (0.54)	3.2 (0.33)	3.2 (0.33)	-	-	-	

\*The lifting capacities are based on ISO 10567 and do not exceed 75% of the static tilt load of the machine or 87% of the hydraulic lifting capacities of the machine.

\*\*The excavator bucket, hook, sling and other lifting accessories are not included on this table.

\* Working ranges are with Kubota standard bucket, without quick coupler.

\* Specifications are subject to change without notice for purpose of improvement.



\* All images shown are for brochure purposes only.

When operating the excavator, wear clothing and equipment in accordance to local legal and safety regulations.

## KUBOTA EUROPE S.A.S.

19 à 25, rue Jules Verceyruisse  
Zone Industrielle - B.P. 50088  
95101 Argenteuil Cedex France  
Téléphone : (33) 01 34 26 34 34  
Télécopieur : (33) 01 34 26 34 99  
<http://www.kubota-eu.com>