

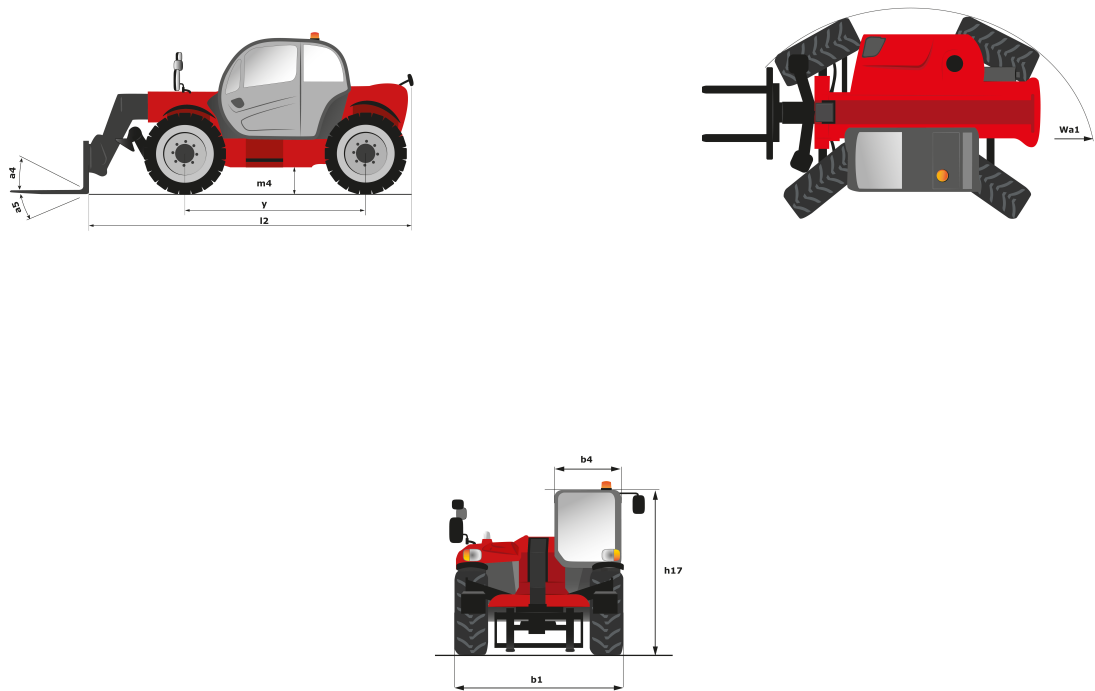
Technical sheet

# ***MT 1030 EASY***

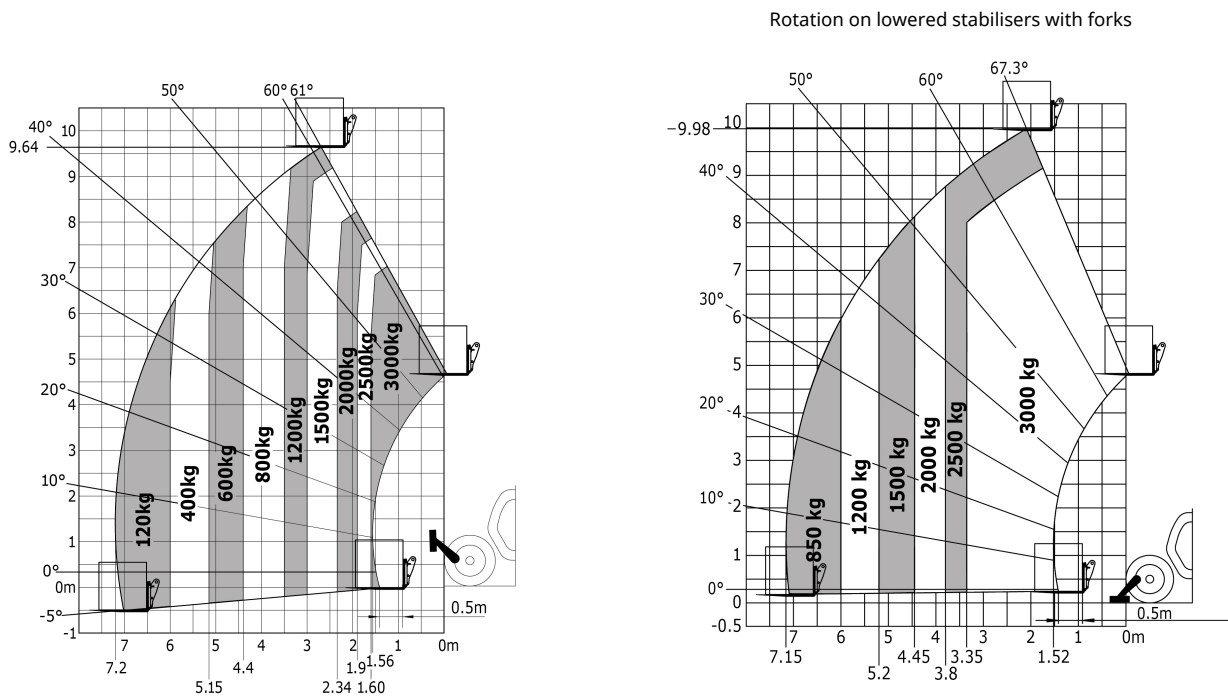
Telehandlers

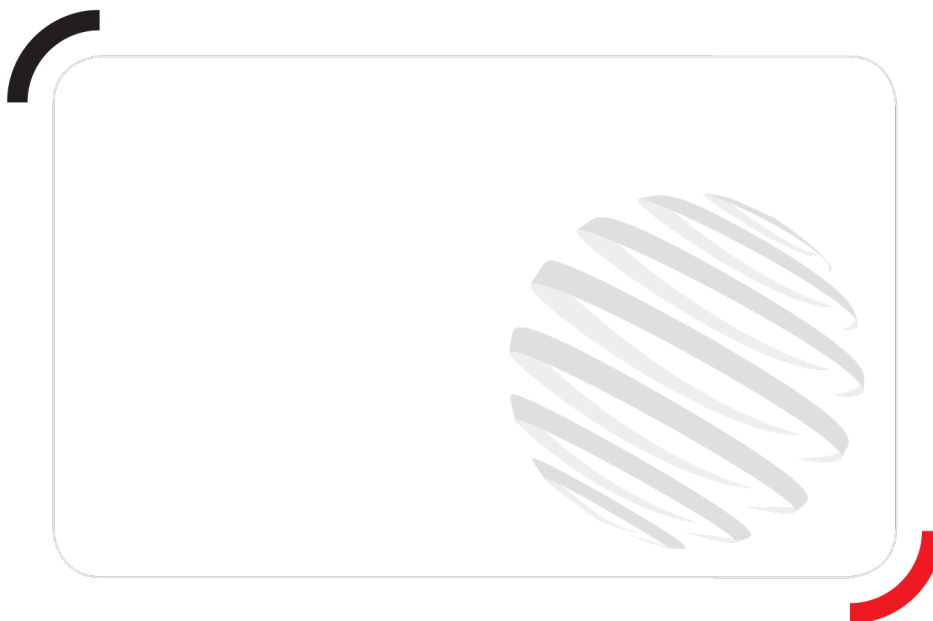


| Capacities                           | Metric   |
|--------------------------------------|--|
| Max. capacity                        | 3000 kg  |
| Max. lift height                     | 9.98 m   |
| Max. reach                           | 7.15 m   |
| Bucket breakout force                | 5330 daN                                       |
| Weight and dimensions                |  |
| l2 - Overall length of fork carriage | 4.99 m   |
| b1 - Overall width                   | 2.34 m   |
| h17 - Overall height                 | 2.30 m   |
| y - Wheelbase                        | 2.69 m   |
| m4 - Ground clearance                | 0.45 m   |
| b4 - Overall cab width               | 0.89 m   |
| Wa1 - Frame outer turning radius     | 3.75 m   |
| Unladen weight (with forks)          | 7720 kg  |
| Standard tyres                       | Pneumatic                                      |
| Standard forks                       | 1200x125x45                                    |
| Performances                         |  |
| Lifting                              | 6.70 s   |
| Lowering                             | 5.40 s   |
| Telescope extension                  | 13.60 s  |
| Retracting the telescope             | 8.70 s   |
| Scoop                                | 2.70 s   |
| Dump                                 | 2.30 s   |
| Engine                               |  |
| Brand                                | Deutz  |
| Environmental standards              | 3B / Tier IV Final                             |
| Model                                | TD 3.6 L                                       |
| Number of cylinders - Capacity       | - - 3621 cm <sup>3</sup>                       |
| Power                                | 75 hp / 55.40 kW                               |
| Max. torque                          | 330 Nm at -                                    |
| Laden drawbar pull                   | 8160 daN                                       |
| Transmission                         |  |
| Type                                 | Torque Converter                               |
| Number of gears (forward/reverse)    | 4/4  |
| Parking brake                        | Oil-Immersed Multi-Discs on Front Axle         |
| Service brake                        | Oil-Immersed Multi-Discs on Front & Rear Axles |
| Hydraulics                           |  |
| Type of pump                         | Gear pump                                      |
| Hydraulic flow rate - Pressure       | 104 l/min - 250 bar                            |
| Tank capacities                      |  |
| Engine oil                           | 128 l  |
| Hydraulic oil                        | 128 l  |
| Fuel                                 | 120 l  |
| Noise & vibration                    |  |
| Noise at driving position (LpA)      | 78 dB(A)                                       |
| Noise to environment (LwA)           | 104 dB(A)                                      |
| Vibration on hands/arms              | <2.5 m/s <sup>2</sup>                          |
| Miscellaneous                        |  |
| Steering wheels / Driving wheels     | 4 / 4  |
| Safety                               | Standard EN 15000<br>Cab ROPS - FOPS Level 2   |
| Controls                             | JSM  |



Load chart





Siège Social  
430 rue de l'Aubinière - 44150 Ancenis Cedex - France  
Tel: +33(0)2 40 09 10 11 - Fax: +33 (0)2 40 09 10 97  
[www.manitou.com](http://www.manitou.com)



This brochure describes versions and configuration options for Manitou products which may be fitted with different equipment. The equipment described in this brochure may be standard, optional or not available depending on version. Manitou reserves the right to change the specifications shown and described at any time and without prior warning. The manufacturer is not liable for the specifications given. For more information, contact your Manitou dealer. Non-contractual document. Product descriptions may differ from actual products. List of specifications is not comprehensive. The logos and visual identity of the company are the property of Manitou and may not be used without authorisation. All rights reserved. The photos and diagrams contained in this brochure are provided for information only.

MANITOU BF SA - Limited company with board of directors - Share capital: 39,547,824 euros - 857 802 508 RCS Nantes